

# SUNRIDGE HIGHLANDS NO 1

LOTS 27 to 35  
IN WEBER COUNTY

SCALE 1"=100'

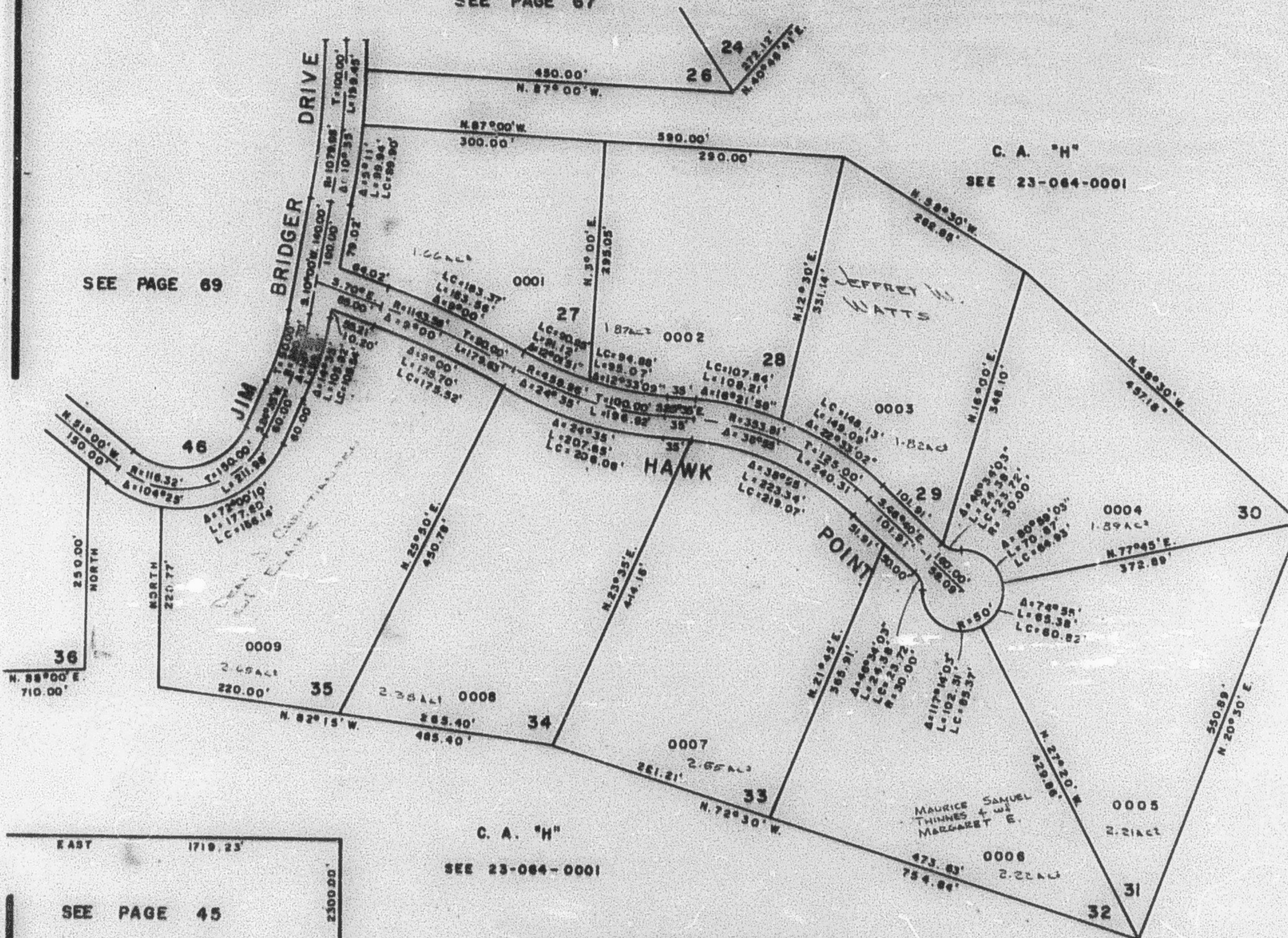
TAXING UNIT: 58

PREFIX: 23-068

EXCEPT WHERE OTHERWISE SHOWN  
ALL LOTS OWNED BY  
SUNRIDGE INC.

SEE PAGE 67

SEE PAGE 69



C. A. "H"

SEE 23-064-0001

EAST 1719.23'

SEE PAGE 45

OR SEE 23-064-0005

SOUTH 2300.00'

MIDDLE FORK DRIVE IS A COUNTY ROAD  
WITH A 66' RIGHT OF WAY. ALL OTHER  
ROADS ARE PRIVATE AND HAVE 30'  
RIGHT OF WAYS.

FOR COMPLETE ENG. DATA SEE ORIG.  
DED. PLAT IN BOOK 18, PAGES 97-99

FOR ALL COMMON AREAS SEE PAGE 64